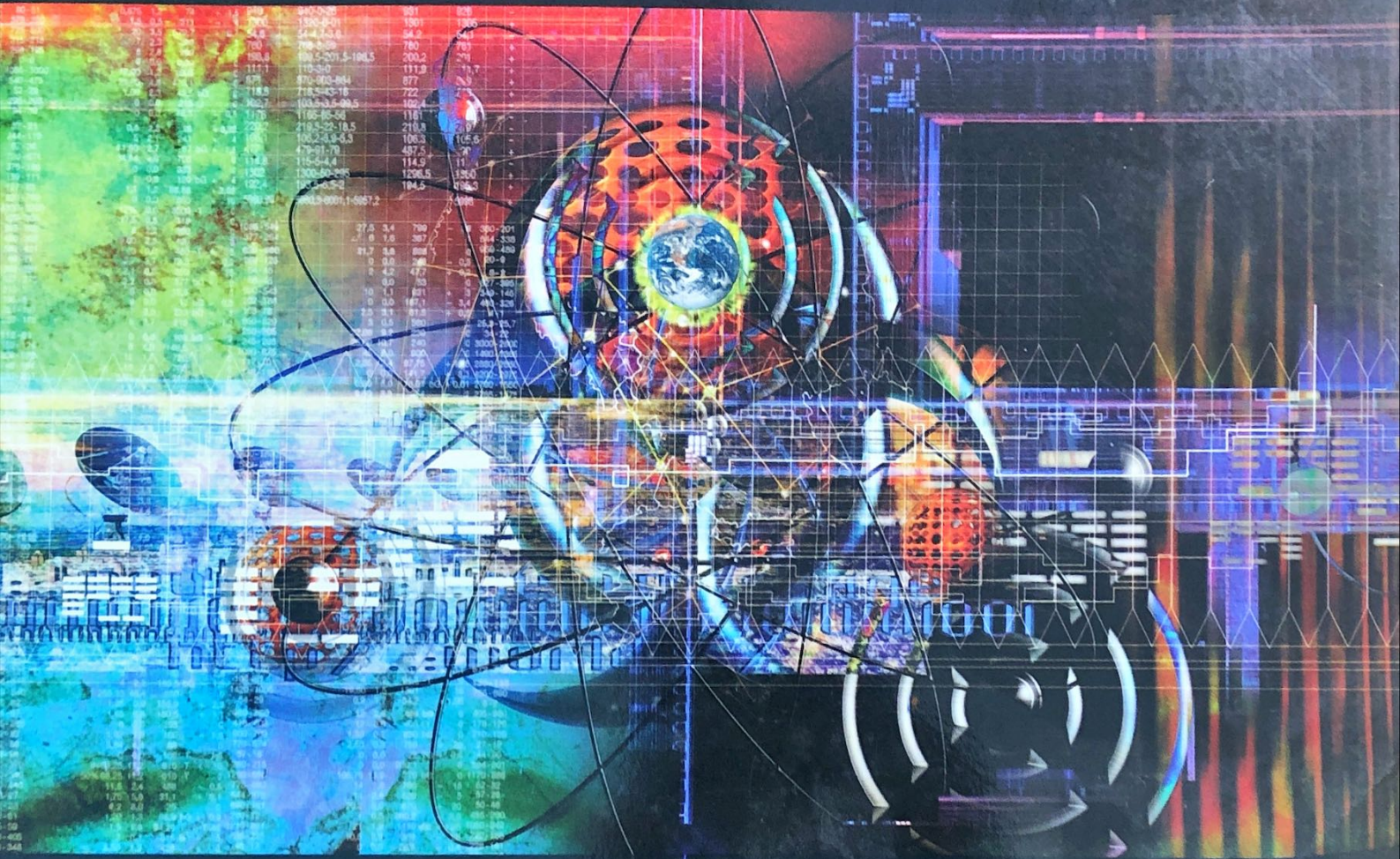


THE O'LEARY SERIES

MICROSOFT®

Excel 2002



Timothy O'Leary
Linda O'Leary

BRIEF

We would like to thank all of the McGraw-Hill/Irwin focus group attendees, reviewers, technical editors, contributors, and Information Technology Advisory Panel participants. Their hard work and detailed feedback has impacted the development of the O'Leary Series. We would also like to thank the many individuals who took the time to send us ideas about how we can make our books the best in the CIT market.

Homer Allen
Joan Alexander
Hashem Anwari
Tom Ashby
Eva Austin
Ken Baker
Karen Lenette Baker
Wayne Ballentine
Vic Barlow
Phil Barnhart
Patti Barr
Gigi Beaton
Neal Bengtson
Sissag Boghikian
Brian Bothern
John Bowers
Nancy Breed
Russell Brestauer
Anthony Brown
Robert Brown
Barbara Buehler
Deborah Buehler
Mary Campbell
Joyce Campbell
Carl Campbell
Glenn Campbell
Dennis Charlton
Gerianne Chapman
Cindy Cloud
Myrna Ann Comer
Maurer
Bill & Sharon Daley
Libby Daugherty
Ronald Davidson
Edward Delean
Kathryn Kay Delk
Catherine Dep-Wah
Davis
Donald Dershem
Warren Dickson
Shirley Dixon
Allen Dooley
John Dunn
George Easton
Elizabeth Warren
Edmiston
Judy Ehresman
Janet Enck
John Enomoto
Jessie Ann Eubanks
David Evans

Xisheng Fang
Shirley Fedorovich
Carole Farley
Nancy Fehrle
Courtney Ferguson
Robert Ferguson
Coralie Fiegel
David Fields
Neal Finkelstein
Lisa Fischer
Ronald Foshee
Arlene Franklin
Colin Fraser
Jessica Garrett
Jack Geurin
Robert Grazinski
Richard Clark Grimes
Lisa Gueldenzoph
Debra Gross
John Gunter
Jill Haft
Debra Harper
Virginia Hartman
John Bowman Harvill
Shohreh Hashemt
Rachael Heal
Liz Helms
Steven Hicks
Dennis Hipp
Patrick Hogan
Glen Johansson
Mary Johnson
Steven Leslie Johnson
Mali Jones
W.G. Kervahn
Lori Kieilty
Thelma Zina King
Dianne Koch
Gerald Kohers
Tawny Lamb
Connie Leathers
Earl Lewis
Dominic Ligori
David Walter Little
Shade Keys Little
Becky Littleton

Bill Liu
Jack Locher
Mary Jane Lockemy
Maurie Lockley
Patricia Rajska Lyon
Karen Main
Timothy Mason
Mindy Mass
William Masser
Robert Ann McClure
Philip McCue
Edna Meeks
James Meeks Jr
Linda Mehlinger
Dion Melton
Mike Michaelson
Ann Miller
Mary Lisa Miller
Katie Mindhardt
Shari Monson
Gayle Kastroff Moody
Gaila Moore
Vernon Douglas
Morgan
Alex Morgan
Harry Morris
Keith Morneau
Ed Mott
Karen Munson
Hamid Nemati
Elizabeth A. Nettles
Thuy Nguyen
Laura Nicholson
Denise Norris
Frank F Ocon
Emmanuel Opara
Tina Ostrander
Laurie Patterson
Woody Pekoske
Jane Pendrey
Charlene Phillips
Carolyn Poe
David Powell
Cathy Poyner
Art Preston
Steve Reanies
Herbert Rebhun
Susan Reedeer
Kathryn Reeves
Becky Lynne Reichenau
Kathy Richer

Julendia Riley
Greg Robison
Melinda K Rose
Elizabeth Roth
Ann Rovetto
June Scott
Krystal Scott
Judy Scheeren
Peter Simis
Lea Ann Simpson
Janice Gale Singh
Gary Smith
Sandy Smith
Stephanie Smith
Jan Spaar
Candice Spangler
Steve St. John
Carol Stams
Diane Stark
Neal Stenlund
Michael Stewardson
DeLana Stokes
Charlie Stout
Sylvia Summers
Michael Taylor
Debbie Tesch
Margaret Thomas
Karen Ann Toreson
John Town
Marion Tucker
Kay Turpin
Gary Tusing
Renenva Walker
Elizabeth Wanielista
Joy Welby
Mark Westlund
Seta Whitby
Shirley Wilkerson
Paul Wilkinson
Mary Williams
Brian Wilson
Donna Wilson
Jennie Yates
V. Yen
Vahid Zardoost
Janet Zimmer

The O'Leary Series

Microsoft® Excel 2002

Brief Edition

Timothy J. O'Leary

Arizona State University

Linda I. O'Leary



Information Technology

GIFT OF THE ASIA FOUNDATION
NOT FOR RE-SALE

QUÀ TẶNG CỦA QUỸ CHÂU Á
KHÔNG ĐƯỢC BÁN LẠI



**McGraw-Hill
Irwin**

Boston Burr Ridge, IL Dubuque, IA Madison, WI New York
San Francisco St. Louis Bangkok Bogotá Caracas Kuala Lumpur
Lisbon London Madrid Mexico City Milan Montreal New Delhi
Santiago Seoul Singapore Sydney Taipei Toronto

MICROSOFT® Excel 2002, BRIEF EDITION

Published by McGraw-Hill/Irwin, an imprint of the McGraw-Hill Companies, Inc. 1221 Avenue of the Americas, New York, NY, 10020. Copyright © 2002 by the McGraw-Hill Companies, Inc. All rights reserved. No part of this publication may be reproduced or distributed in any form or by any means, or stored in a database or retrieval system, without the prior written consent of The McGraw-Hill Companies, Inc., including, but not limited to, in any network or other electronic storage or transmission, or broadcast for distance learning.

Some ancillaries, including electronic and print components, may not be available to customers outside the United States.

Disclaimer: This book is designed to help you improve your computer use. However, the author and publisher assume no responsibility whatsoever for the uses made of this material or for decisions based on their use, and make no warranties, either expressed or implied, regarding the contents of this book, its merchantability, or its fitness for any particular purpose.

Neither the publisher nor anyone else who has been involved in the creation, production, or delivery of this product shall be liable for any direct, incidental, or consequential damages, such as, but not limited to, loss of anticipated profits or benefits or benefits resulting from its use or from any breach of warranty. Some states do not allow the exclusion or limitation of direct, incidental, or consequential damages, so the above disclaimer may not apply to you. No dealer, company, or person is authorized to alter this disclaimer. Any representation to the contrary will not bind the publisher or author.

This book is printed on acid-free paper.

domestic 4 5 6 7 8 9 0 QPD/QPD 0 9 8 7 6 5 4 3
international 1 2 3 4 5 6 7 8 9 0 QPD/QPD 0 9 8 7 6 5 4 3 2 1

ISBN 0-07-247235-9

Publisher: *George Werthman*
Developmental editor: *Alexandra Arnold*
Senior marketing manager: *Jeffrey Paar*
Senior project manager: *Jean Hamilton*
Manager, new book production: *Melonie Salvati*
Media producer: *David Barrick*
Freelance design coordinator: *Gino Cieslik*
Lead supplement coordinator: *Marc Mattson*
Photo research coordinator: *David A. Tietz*
Cover & interior design: *Maureen McCutcheon*
Cover image: *Digitalvision*
Typeface: *10.5/13 New Aster*
Compositor: *Rogondino & Associates*
Printer: *Quebecor World Dubuque Inc.*

Library of Congress Control Number 2001092433

INTERNATIONAL EDITION ISBN 0-07-112356-3

Copyright © 2002, Exclusive rights by The McGraw-Hill Companies, Inc. for manufacture and export.

This book cannot be re-exported from the country to which it is sold by McGraw-Hill.

The International Edition is not available in North America.

www.mhhe.com



Information Technology

Information Technology at McGraw-Hill/Irwin

At McGraw-Hill Higher Education, we publish instructional materials targeted at the higher education market. In an effort to expand the tools of higher learning, we publish texts, lab manuals, study guides, testing materials, software, and multimedia products.

At McGraw-Hill/Irwin (a division of McGraw-Hill Higher Education), we realize that technology has created and will continue to create new mediums for professors and students to use in managing resources and communicating information to one another. We strive to provide the most flexible and complete teaching and learning tools available as well as offer solutions to the changing world of teaching and learning.

McGraw-Hill/Irwin is dedicated to providing the tools for today's instructors and students to successfully navigate the world of Information Technology.

- **Seminar Series** McGraw-Hill/Irwin's Technology Connection seminar series offered across the country every year demonstrates the latest technology products and encourages collaboration among teaching professionals.
- **McGraw-Hill/Osborne** This division of The McGraw-Hill Companies is known for its best-selling Internet titles, *Internet & Web Yellow Pages* and the *Internet Complete Reference*. For more information, visit Osborne at www.osborne.com.
- **Digital Solutions** McGraw-Hill/Irwin is committed to publishing digital solutions. Taking your course online doesn't have to be a solitary adventure, nor does it have to be a difficult one. We offer several solutions that will allow you to enjoy all the benefits of having your course material online.
- **Packaging Options** For more information about our discount options, contact your McGraw-Hill/Irwin Sales representative at 1-800-338-3987 or visit our web site at www.mhhe.com/it.

Brief Contents

Labs		
	Introduction to Microsoft Office 2002	I.1
	Overview To Excel 2002	EXO.1
1	Lab 1: Creating and Editing a Worksheet	EX1.1
2	Lab 2: Charting Worksheet Data	EX2.1
3	Lab 3: Managing and Analyzing a Workbook	EX3.1
	Working Together: Linking, Embedding, and E-Mailing	EXWT.1
	Command Summary	EXCS.1
	Glossary of Key Terms	EXG.1
	Reference 1	EXR1.1
	Reference 2	EXR2.1
	Index	EXI.1

Detailed Contents

Introduction to Microsoft Office XP I.1

What Is Office XP?	I.1
Word 2002	I.1
Excel 2002	I.3
Access 2002	I.5
PowerPoint 2002	I.7
Common Office XP Features	I.8
Starting an Office Application	I.9
Using Menus	I.10
Using the Office Assistant	I.13
Using Help	I.15
Using the Contents Tab	I.16
Using a Hyperlink	I.17
Using the Index Tab	I.20
Using the Answer Wizard	I.22
Getting Help on the Web	I.23
Using Toolbars	I.24
Exiting an Office Application	I.27
Lab Review	I.28
Key Terms	I.28
Command Summary	I.28

EXCEL

Overview of Excel 2002 EXO.1

What is an Electronic Spreadsheet?	EXO.1
Excel 2002 Features	EXO.2
Case Study for Excel 2002 Labs	EXO.2
Before You Begin	EXO.3
Microsoft Office Shortcut Bar	EXO.4
Instructional Conventions	EXO.5

Lab

1 Creating and Editing a Worksheet EX1.1

Exploring Excel 2002	EX1.4
Starting Excel 2002	EX1.5
Exploring the Excel Window	EX1.5
Exploring the Workbook Window	EX1.7
Moving around the Worksheet	EX1.9
Creating New Workbooks	EX1.12
Using the Default Workbook Template	EX1.12
Developing a Workbook	EX1.13
Entering and Editing Data	EX1.14
Entering Text	EX1.15
Clearing an Entry	EX1.17
Editing an Entry	EX1.17
Using AutoCorrect	EX1.20
Entering Numbers	EX1.23
Changing Column Widths	EX1.24
Dragging the Column Boundary	EX1.24
Using AutoFit	EX1.25
Saving, Closing, and Opening Workbooks	EX1.26
Saving a New Workbook	EX1.26
Closing a Workbook	EX1.28
Opening an Existing Workbook	EX1.28
Duplicating Cell Contents	EX1.31
Using Copy and Paste	EX1.31
Selecting a Range	EX1.34
Using the Fill Handle	EX1.36
Inserting Copied Cells	EX1.36
Moving Entries	EX1.37
Working with Formulas	EX1.39
Entering Formulas	EX1.39
Copying Formulas	EX1.40

Entering Functions	EX1.41	Changing the Chart Location	EX2.15
Using Pointing to Enter a Formula	EX1.45	Creating a Multiple Data Series Chart	EX2.16
Recalculating the Worksheet	EX1.47	Changing the Chart Type	EX2.18
Inserting Rows	EX1.48	Adding Chart Titles	EX2.23
Formatting the Worksheet	EX1.49	Moving the Legend	EX2.24
Changing Cell Alignment	EX1.49	Formatting Chart Elements	EX2.24
Indenting Entries	EX1.51	Changing Orientation	EX2.27
Centering across a Selection	EX1.53	Creating a New Chart from an Existing Chart	EX2.29
Changing Fonts and Font Styles	EX1.54	Copying a Chart	EX2.29
Applying Character Effects	EX1.56	Creating a Combination Chart	EX2.30
Using Undo	EX1.57	Adding Data Labels	EX2.31
Using Format Painter	EX1.58	Changing Data Series Fill Colors	EX2.33
Formatting Numbers	EX1.58	Changing Plot Area Colors	EX2.33
Using Styles	EX1.61	Changing Worksheet Data	EX2.34
Adding Color	EX1.63	Adding a Text Box	EX2.35
Working with Graphics	EX1.65	Adding Arrows	EX2.38
Inserting Graphics	EX1.65	Creating and Formatting a Pie Chart	EX2.39
Sizing Graphics	EX1.67	Selecting the Pie Chart Data	EX2.39
Entering the Date	EX1.68	Formatting the Pie Chart	EX2.41
Previewing and Printing a Workbook	EX1.69	Exploding and Rotating the Pie	EX2.42
Exiting Excel 2002	EX1.73	Applying Patterns and Color	EX2.43
Concept Summary	EX1.74	Documenting a Workbook	EX2.46
Lab Review	EX1.76	Preparing the Workbook for Printing	EX2.47
Key Terms	EX1.76	Previewing the Workbook	EX2.47
MOUS Skills	EX1.76	Sizing the Worksheet	EX2.51
Command Summary	EX1.77	Aligning a Sheet on a Page	EX2.51
Lab Exercises	EX1.79	Adding Predefined Headers and Footers	EX2.52
Terminology	EX1.79	Printing the Workbook	EX2.54
Screen Identification	EX1.79	Concept Summary	EX2.56
Matching	EX1.80	Lab Review	EX2.58
Multiple Choice	EX1.80	Key Terms	EX2.58
True/False	EX1.82	MOUS Skills	EX2.58
Concepts	EX1.83	Command Summary	EX2.59
Fill-In	EX1.83	Lab Exercises	EX2.60
Discussion Questions	EX1.83	Terminology	EX2.60
Hands-On Exercises	EX1.84	Screen Identification	EX2.60
Step-by-Step	EX1.84	Matching	EX2.61
On Your Own	EX1.89	Multiple Choice	EX2.61
On the Web	EX1.90	True/False	EX2.62
		Concepts	EX2.63
		Fill-In	EX2.63
		Discussion Questions	EX2.63
		Hands-On Exercises	EX2.64
		Step-by-Step	EX2.64
		On Your Own	EX2.69

Lab

2

Charting Worksheet Data

EX2.1

Learning About Charts	EX2.4
Creating a Single Data Series Chart	EX2.6
Selecting the Data to Chart	EX2.7
Using Chart Wizard	EX2.8
Moving and Sizing a Chart	EX2.14

3 Managing and Analyzing a Workbook EX3.1

Correcting Worksheet Errors	EX3.4
Checking Spelling	EX3.4
Correcting Formula Errors	EX3.8
Using Absolute References	EX3.14
Working with Sheets	EX3.18
Copying Between Sheets	EX3.18
Renaming Sheets and Coloring Sheet Tabs	EX3.20
Filling a Series	EX3.21
Referencing Multiple Sheets	EX3.23
Deleting and Moving Sheets	EX3.27
Managing Large Sheets	EX3.29
Zooming the Worksheet	EX3.29
Going to a Specific cell	EX3.31
Splitting Windows	EX3.32
Freezing Panes	EX3.35
Watching Cells	EX3.38
Forecasting Values	EX3.39
Performing What-If Analysis Manually	EX3.39
Using Goal Seek	EX3.40
Changing Values Using a Chart	EX3.42
Customizing Print Settings	EX3.44
Changing Page Orientation	EX3.44
Displaying Gridlines and Centering on Page	EX3.46
Adding Custom Headers and Footers	EX3.47
Printing Selected Sheets	EX3.50
Concept Summary	EX3.52
Lab Review	EX3.54
Key Terms	EX3.54
MOUS Skills	EX3.54
Command Summary	EX3.55
Lab Exercises	EX3.56
Terminology	EX3.56
Screen Identification	EX3.56
Matching	EX3.57
Multiple Choice	EX3.57
True/False	EX3.58
Concepts	EX3.59
Fill-In	EX3.59
Discussion Questions	EX3.59
Hands-On Exercises	EX3.60
Step-by-Step	EX3.60
On Your Own	EX3.67
On the Web	EX3.67

Working Together: Linking, Embedding, and E-mailing EXWT.1

Copying Between Applications	EXWT.2
Copying a Worksheet to a Word Document	EXWT.2
Linking Between Applications	EXWT.6
Linking a Chart Object to a Word Document	EXWT.6
Updating a Linked Object	EXWT.7
Editing Links	EXWT.9
Embedding an Object in Another Application	EXWT.10
Embedding a Worksheet in a Word Document	EXWT.11
Updating an Embedded Object	EXWT.13
E-Mailing the Memo	EXWT.14
Deciding When to Link or Embed Objects	EXWT.16
Lab Review	EXWT.17
Key Terms	EXWT.17
Command Summary	EXWT.17
Lab Exercises	EXWT.18
Hands-On Exercises	EXWT.18
Step-by-Step	EXWT.18
Command Summary	EXCS.1
Glossary of Key Terms	EXG.1
Reference 1—Data File List	EXR1.1
Reference 2—MOUS Skills	EXR2.1
Index	EXI.1

Acknowledgments

The new edition of The O'Leary Series has been made possible only through the enthusiasm and dedication of a great team of people. Because the team spans the country, literally from coast to coast, we have utilized every means of working together including conference calls, FAX, e-mail, and document collaboration. We have truly tested the team approach and it works!

Leading the team from McGraw-Hill/Irwin are George Werthman, Publisher and Alexandra Arnold, Developmental Editor. Their renewed commitment, direction, and support have infused the team with the excitement of a new project.

The production staff is headed by Jean Hamilton, Project Manager, whose planning and attention to detail has made it possible for us to successfully meet a very challenging schedule. Members of the production team include: Gino Cieslik, Designer; Pat Rogondino, Compositor; Susan Defosset, Copy Editor; Melonie Salvati, Production Supervisor; Marc Mattson, Supplement Coordinator; and David Barrick, Media Producer. We would particularly like to thank Pat and Susan—team members for many past editions whom we can always depend on to do a great job.

Finally, we are particularly grateful to a small but very dedicated group of people who helped us develop the manuscript. Colleen Hayes, Susan Demar, and Kathy Duggan have helped on the last several editions and continue to provide excellent developmental and technical support. To Steve Willis and Carol Cooper who provide technical expertise, youthful perspective, and enthusiasm, my thanks for helping get the manuscripts out the door and meeting the deadlines.